

# LogTag Recorders



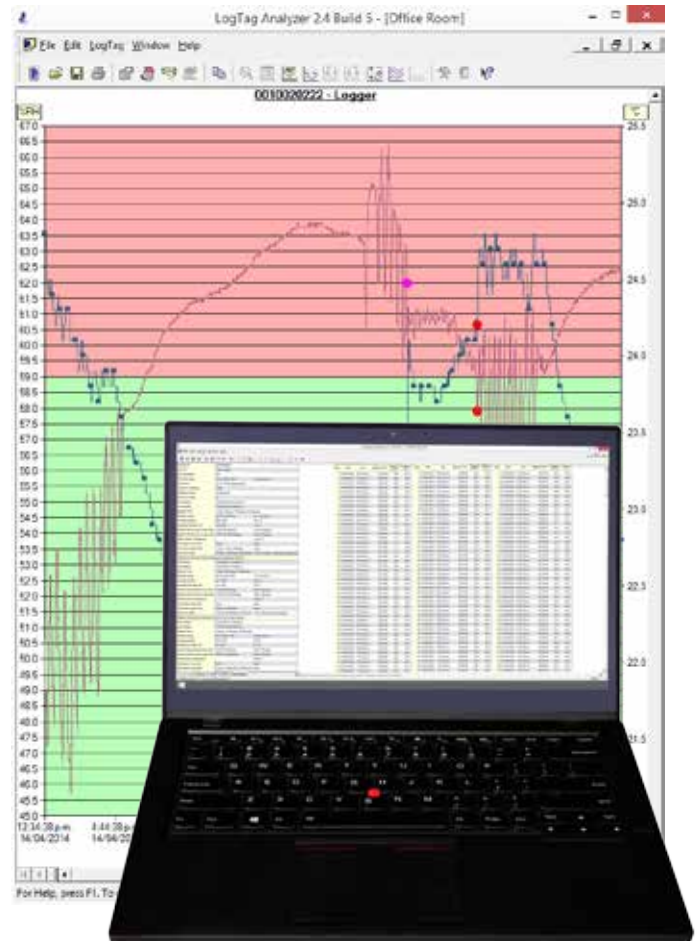
## TRID30-7 Multi-Use Temperature Recorder

The LogTag® TRID30-7 temperature recorder features a display together with a data logging function storing up to 7770 temperature readings. Statistical temperature and duration readings for up to 30 days can be reviewed on the display.

The visual display of current temperature and previous alarms is an important feature in “static” applications such as cool rooms and refrigerators. The TRID30-7 can also be used in transit applications where a direct readout of the statistical data is required without use of a computer or readout device.

## Product Highlights

- A real time clock provides date/time stamps for each temperature reading.
- 30 day On-screen summary in calendar-like summary
- Push-to-start button with optional delay or a specific time & date.
- Comprehensive customisation options including alert settings, sample interval and trip duration.
- Robust and durable polycarbonate case with lug for secure mounting.
- Up to 8,000 recordings - enough for the longest trip.
- In-transit inspections can be recorded at the push of a button.
- Industry best download time - less than 5 seconds for fully memory.



# TRID30-7 Specifications



FDA CFR21 Part 11 Compliance



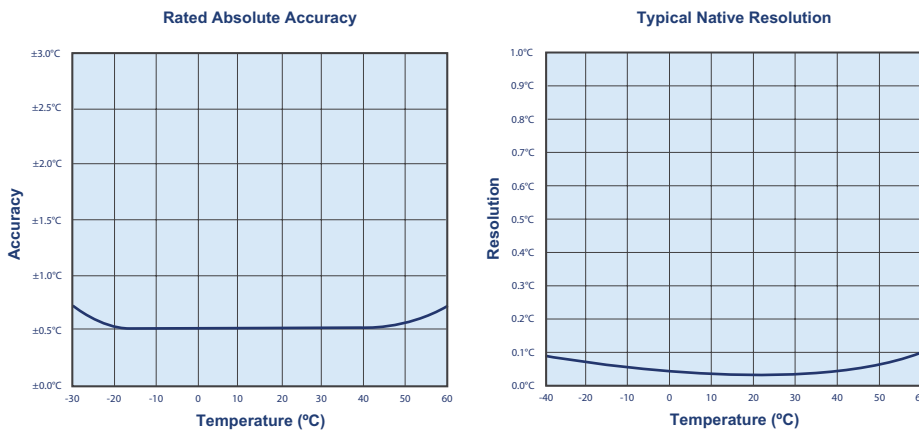
RoHS Directive



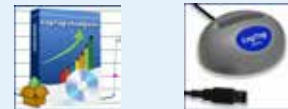
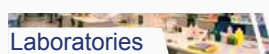
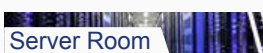
EMC Compliance

<b>Product Model</b>	TRID30-7
<b>Measurement Range</b>	-30°C ~ +60°C (-22°F ~ +140°F)
<b>Capacity</b>	Data logging memory : 7770 logs ( 53 days @ 10min logging, 80 days @ 15min logging). Day summary statistics memory (for display on LCD): up for 30 days of Max/Min and duration values
<b>Sampling Interval</b>	Adjustable, 30 seconds to several hours
<b>Environmental</b>	IP65 (roughly equivalent to NEMA 4)
<b>Power Source</b>	3V LiMg battery
<b>Battery Life</b>	2 ~ 3 years of normal use (based on 15 minute logging, download data monthly).
<b>Size</b>	86mm(H)x54.5mm(W)x8.6mm(T)
<b>Weight</b>	35g
<b>Case Material</b>	Polycarbonate

## Accuracy/Resolution Charts



## Recommended Applications



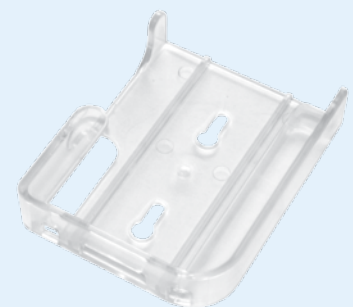
LogTag's unique interface cradle design provides rapid & reliable LogTag data transfer.

**Note:** Users do not need to purchase more than one Interface Cradle per LogTag product.

## Accessories



Protective Enclosure



Wall Mount Bracket